

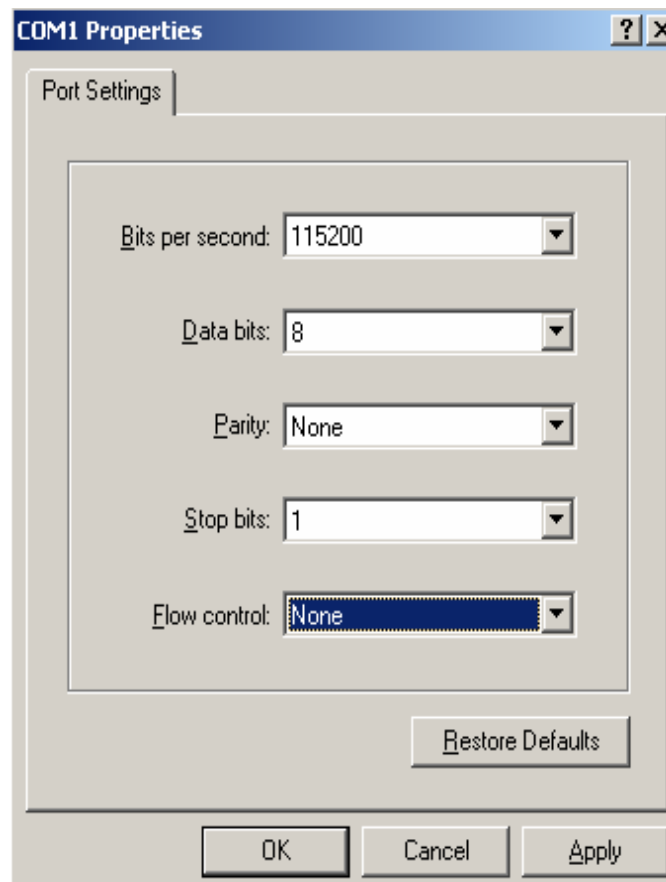
Collecting Log Files through the Serial Port

HyperTerminal Settings

The communication can be established with the null modem cable by using the following settings:

- Baud rate 115200
- Data bits 8
- Parity None or 0 (Depends on version of Hyper Terminal)
- Stop bits 1
- Flow control None

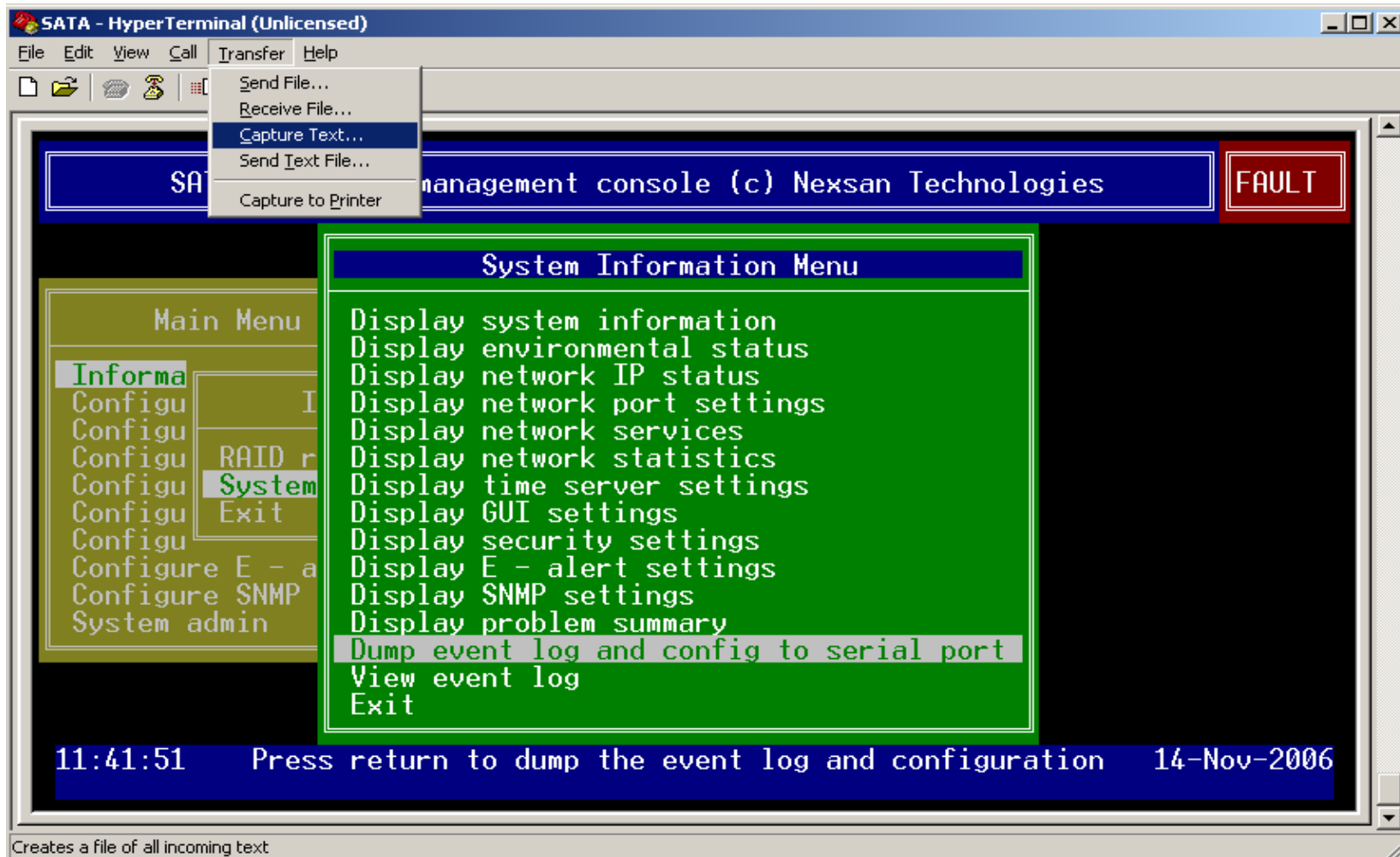
HyperTerminal Settings Window



Hit OK then hit return or the space bar to establish communication.

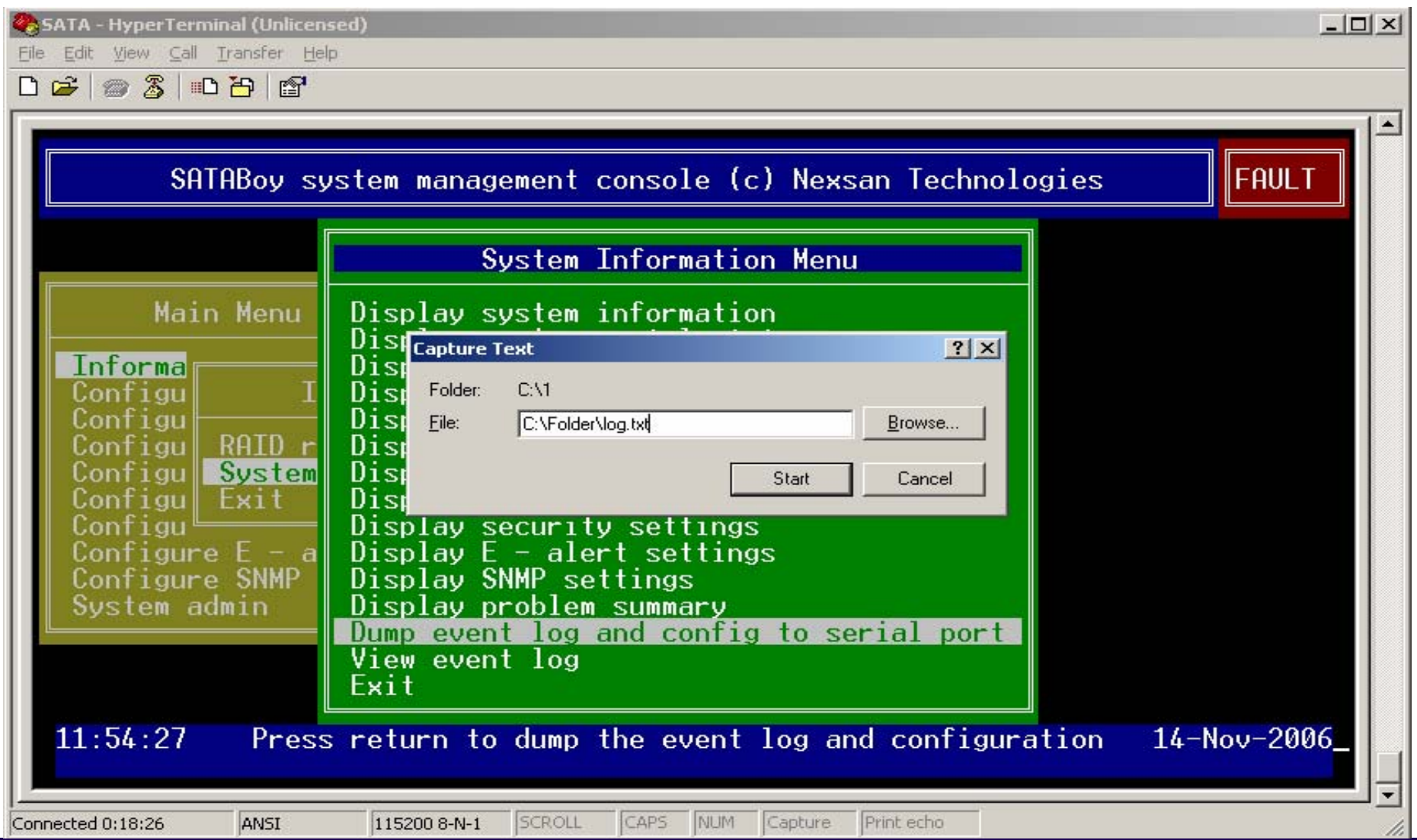
Creating a File to Capture the printout

- Select **Transfer** at the top of the Terminal window
- Select **Capture Text** and move to the next step



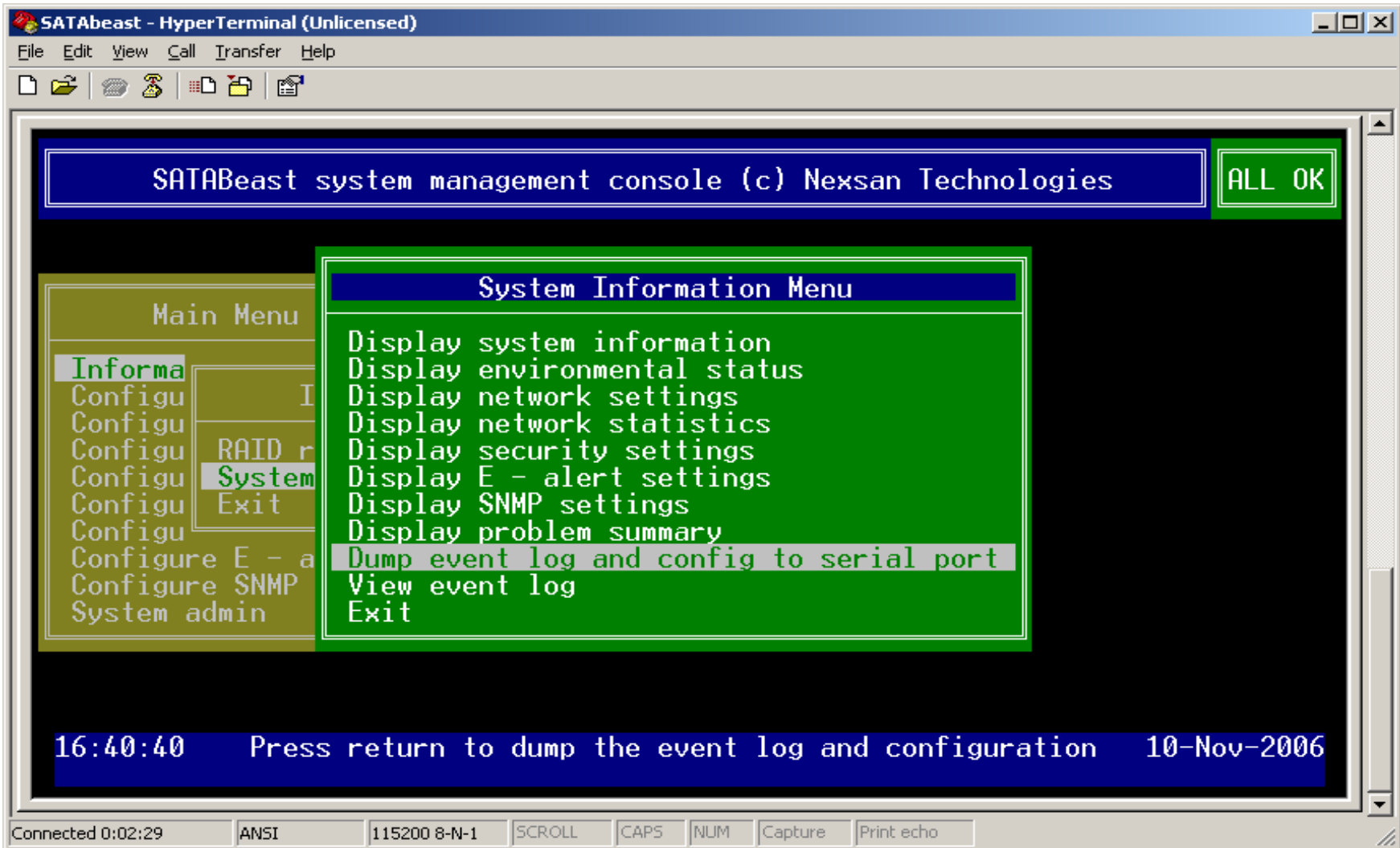
Creating the Text File

- 📁 Browse to the location the file will be saved
- 📁 Save as a text .txt file



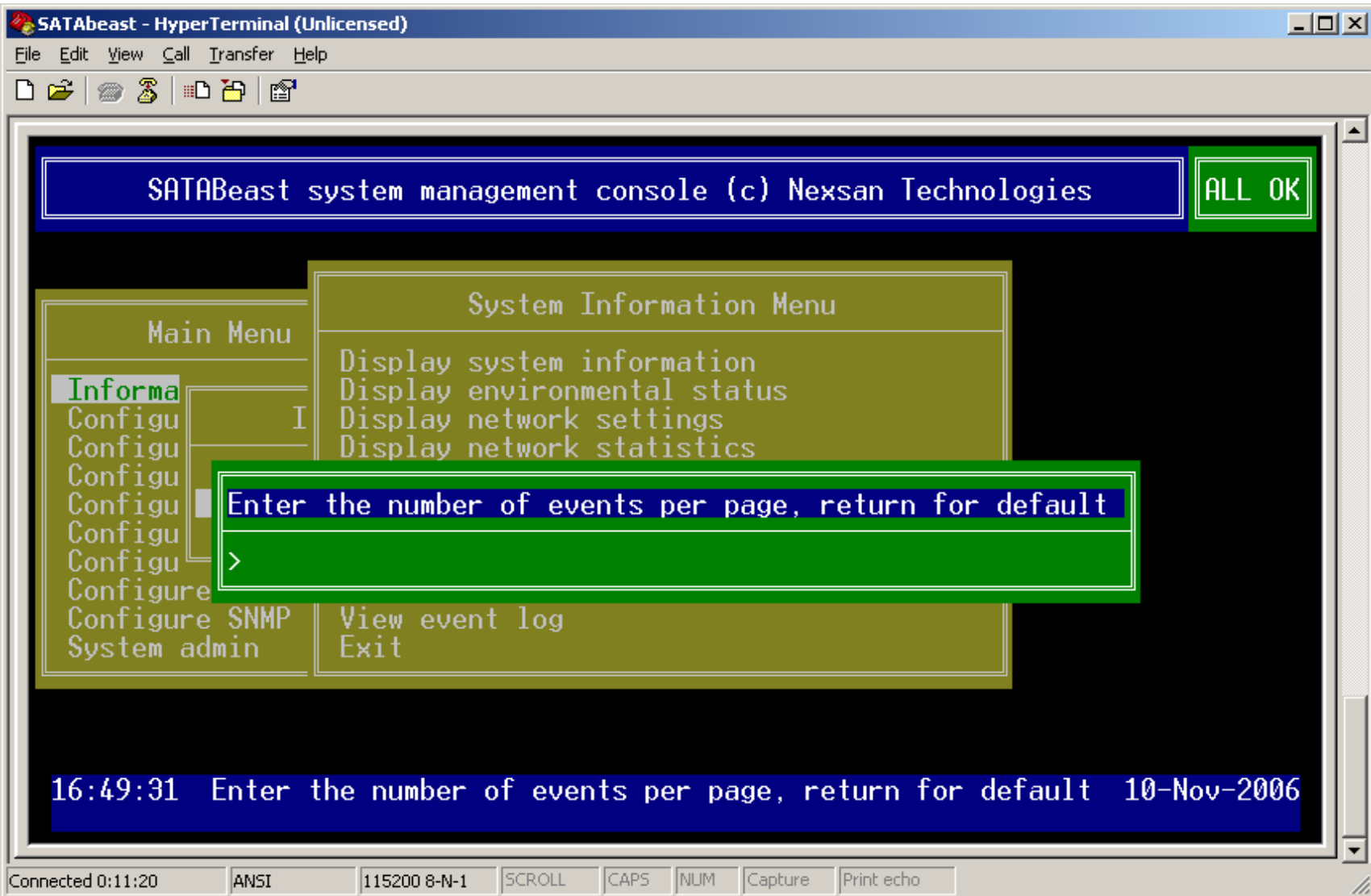
Dumping the Log to Serial

- From the Main menu select Information>
- System Related Information>
- Dump event log and config to serial port. Some versions of firmware may only display > Dump Event Log.
- Then press enter to dump the file.



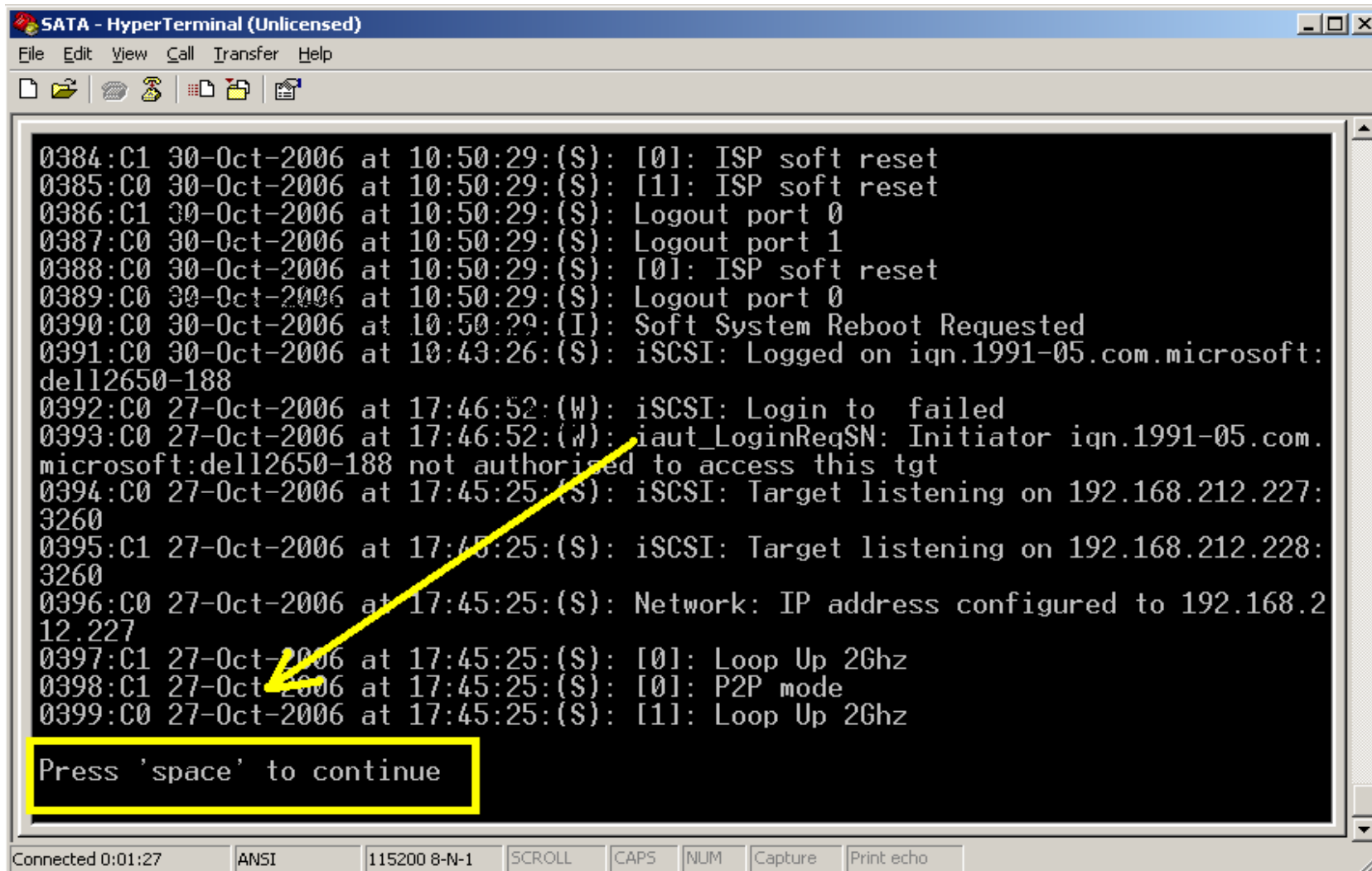
Number of Events

- Select the Number of events per page or enter for the defaults.



Capturing Events

- Keep pressing the space bar until you reach end of the page
- Your log file has been captured to the created file.



```

SATA - HyperTerminal (Unlicensed)
File Edit View Call Transfer Help
[Icons]
0384:C1 30-Oct-2006 at 10:50:29:(S): [0]: ISP soft reset
0385:C0 30-Oct-2006 at 10:50:29:(S): [1]: ISP soft reset
0386:C1 30-Oct-2006 at 10:50:29:(S): Logout port 0
0387:C0 30-Oct-2006 at 10:50:29:(S): Logout port 1
0388:C0 30-Oct-2006 at 10:50:29:(S): [0]: ISP soft reset
0389:C0 30-Oct-2006 at 10:50:29:(S): Logout port 0
0390:C0 30-Oct-2006 at 10:50:29:(I): Soft System Reboot Requested
0391:C0 30-Oct-2006 at 10:43:26:(S): iSCSI: Logged on iqn.1991-05.com.microsoft:
dell2650-188
0392:C0 27-Oct-2006 at 17:46:52:(W): iSCSI: Login to failed
0393:C0 27-Oct-2006 at 17:46:52:(W): iaut_LoginReqSN: Initiator iqn.1991-05.com.
microsoft:dell2650-188 not authorized to access this tgt
0394:C0 27-Oct-2006 at 17:45:25:(S): iSCSI: Target listening on 192.168.212.227:
3260
0395:C1 27-Oct-2006 at 17:45:25:(S): iSCSI: Target listening on 192.168.212.228:
3260
0396:C0 27-Oct-2006 at 17:45:25:(S): Network: IP address configured to 192.168.2
12.227
0397:C1 27-Oct-2006 at 17:45:25:(S): [0]: Loop Up 2Ghz
0398:C1 27-Oct-2006 at 17:45:25:(S): [0]: P2P mode
0399:C0 27-Oct-2006 at 17:45:25:(S): [1]: Loop Up 2Ghz

Press 'space' to continue
Connected 0:01:27  ANSI  115200 8-N-1  SCROLL  CAPS  NUM  Capture  Print echo
  
```

**If you are still having issues feel free to contact
Technical Support**

866.2.NEXSAN - 866.263.9726 (Toll free)

+1.760.690.1111 (Outside of North America)

+44.01332.291600 (Europe)

support@nexsan.com

Thank you